

GEAUGA COUNTY GEODETIC SURVEY

MONUMENT RECORD

STATION: Mon # 717

TOWNSHIP: Auburn

STATE PLANE COORDINATE SYSTEM:

OHIO NORTH ZONE

HORIZONTAL CONTROL DATA

VERTICAL CONTROL DATA

TYPE: \_\_\_\_\_

TYPE: \_\_\_\_\_

ORDER: \_\_\_\_\_

ORDER: \_\_\_\_\_

LATITUDE: \_\_\_\_\_ LONGITUDE: \_\_\_\_\_

ELEVATION (FEET): \_\_\_\_\_

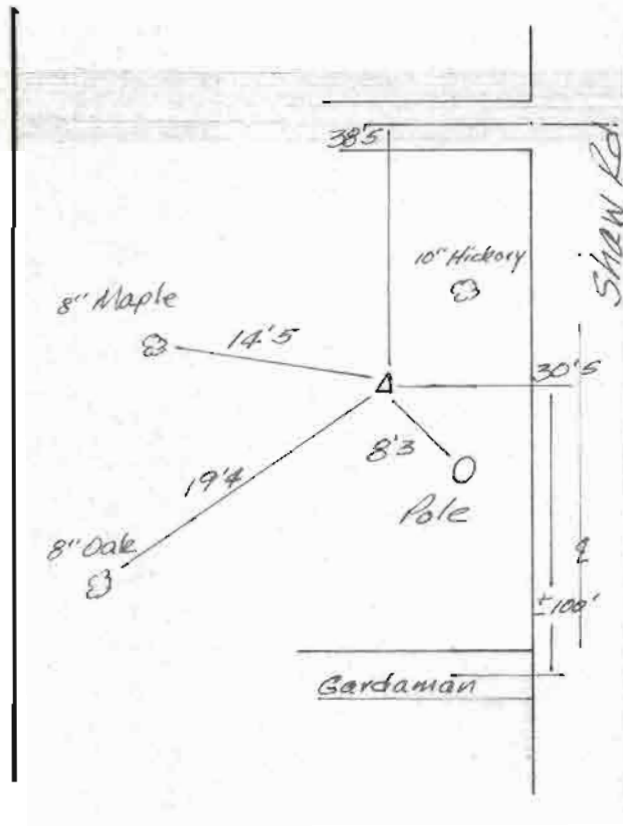
1150.82

Y (NORTH) (FEET): \_\_\_\_\_ X (EAST) (FEET): \_\_\_\_\_

ELEVATION (METERS): \_\_\_\_\_

Y (NORTH) (METERS): \_\_\_\_\_ X (EAST) (METERS): \_\_\_\_\_

DESCRIPTION:



THE MONUMENTS SET BY THIS SURVEY ARE 2.5" DIAMETER BRASS PLATES SET IN CONCRETE POSTS. THE PLATE READS, GEAUGA COUNTY CONTROL SURVEY. THE MONUMENTS SHOULD ACTUATE MAGNETIC LOCATOR DEVICES.

RECOVERY: NOTES: